

Main aspects for the development of waste treatment projects

Luciano Pelloni

IRF – Workshop in Poznan, 22. November 2012

tbf TBF+Partner AG
Consulting Engineers

Content

2

- 1 Goal and Task**
- 2 Project risks**
- 3 Project development**
- 4 Procurement models**
- 5 Conclusion**

IRF – Workshop in Poznan, 22. November 2012

tbf TBF+Partner AG
Consulting Engineers

Goal: “Smooth project realization”

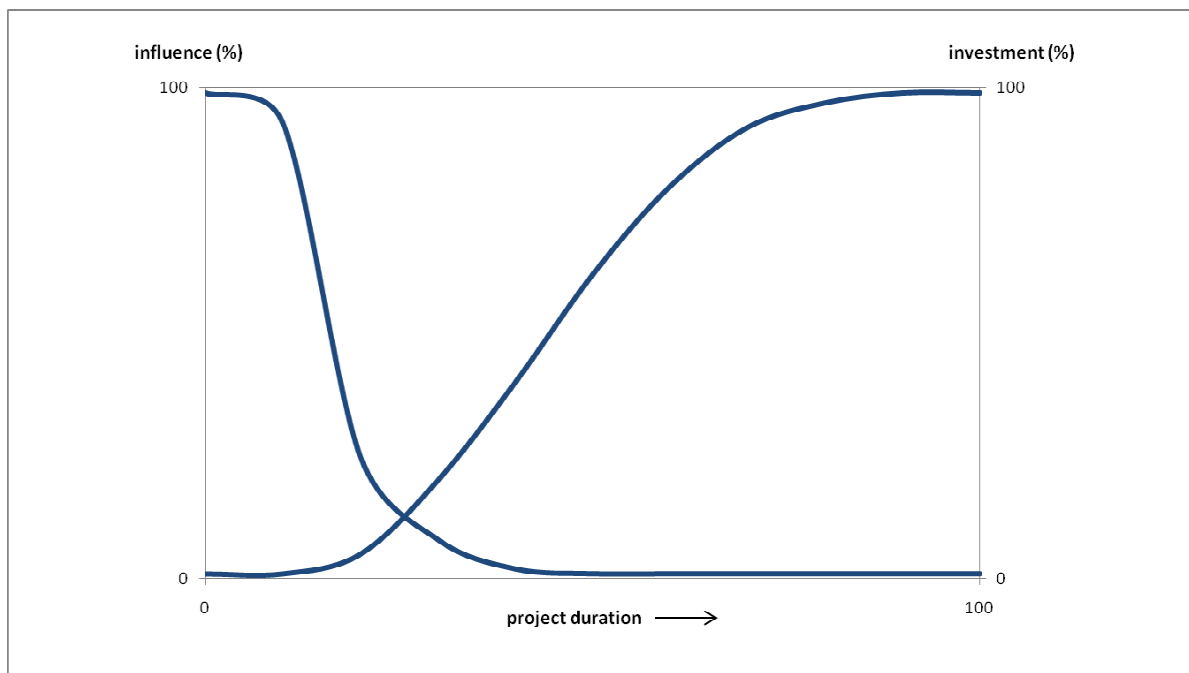
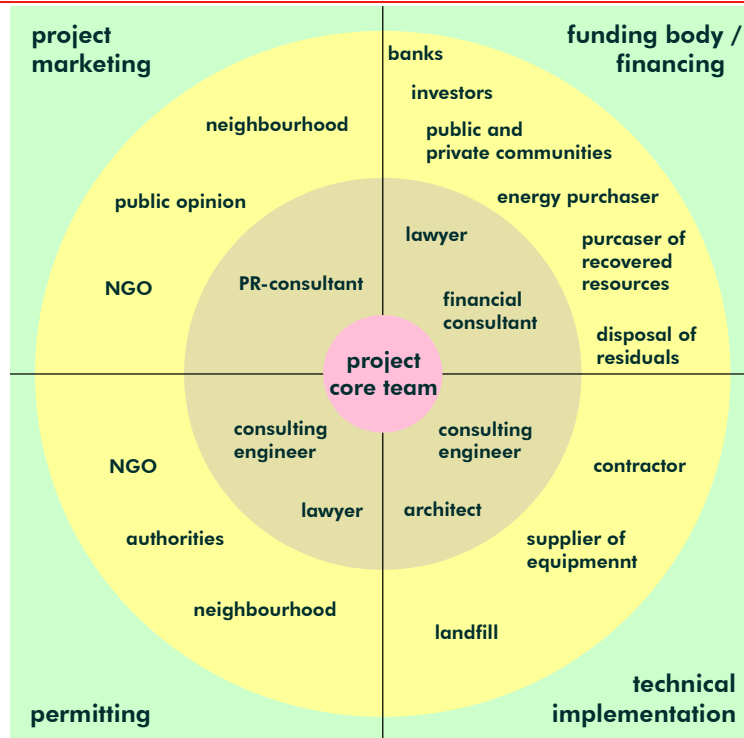
→ Identify **project risks**

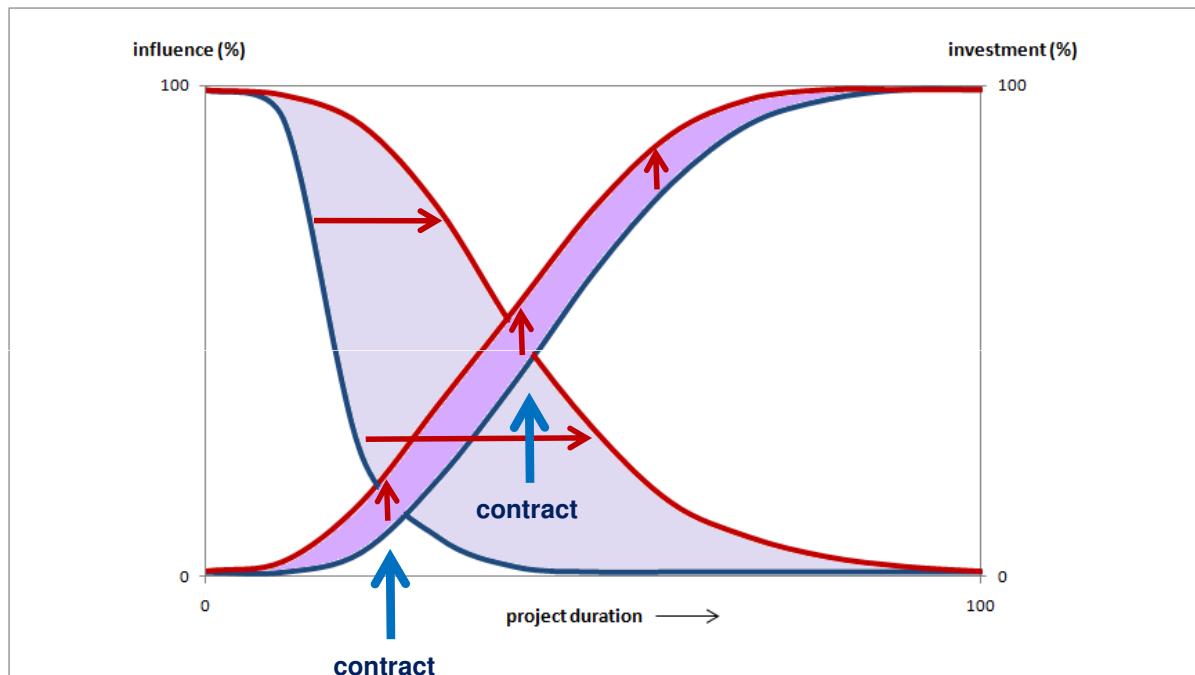
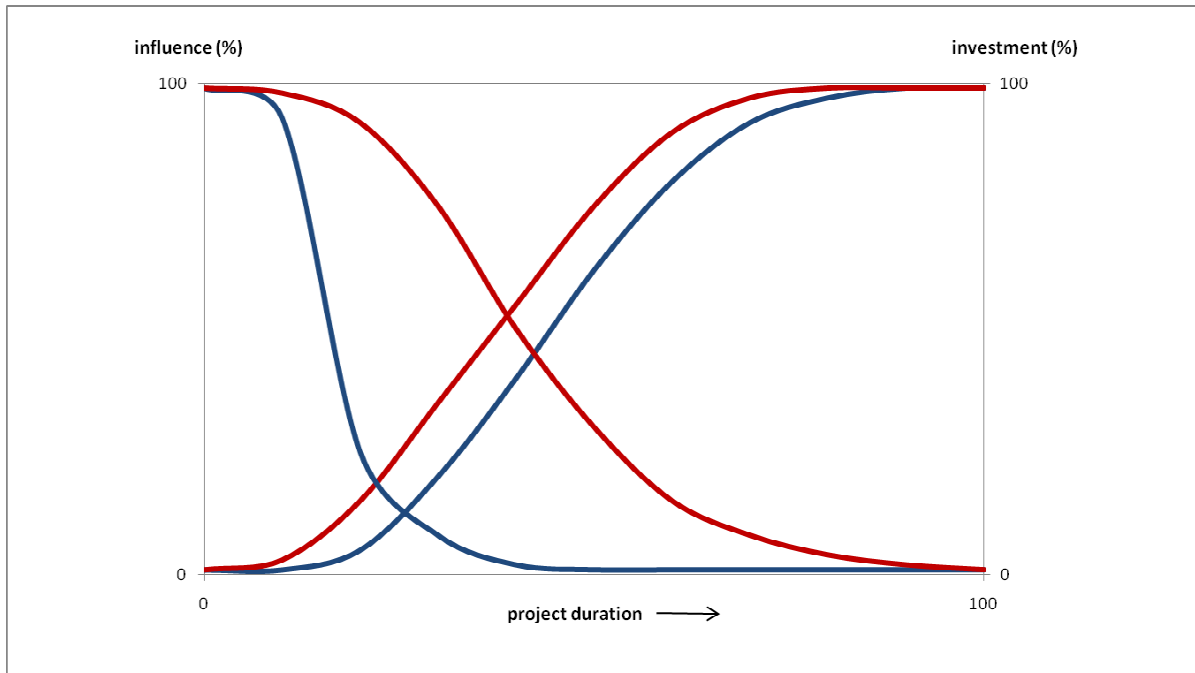
→ Search means to **overcome** or **mimize** them

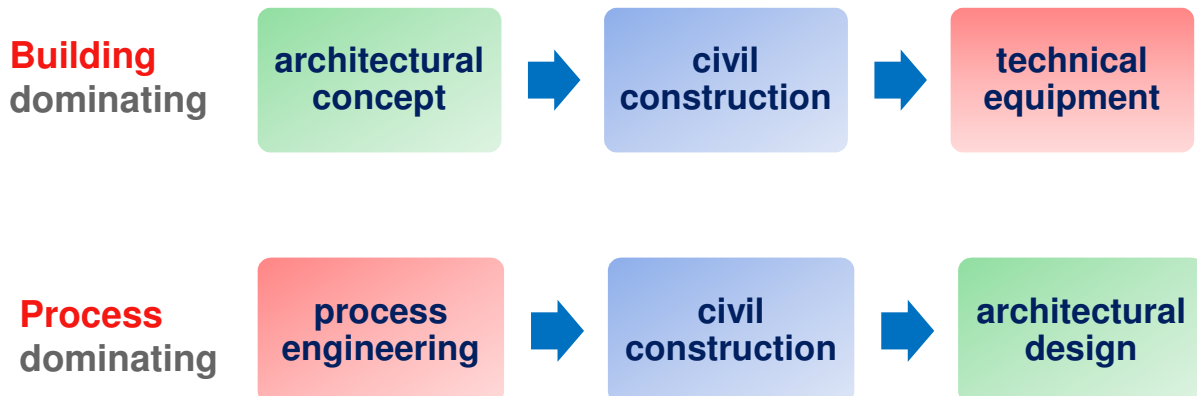
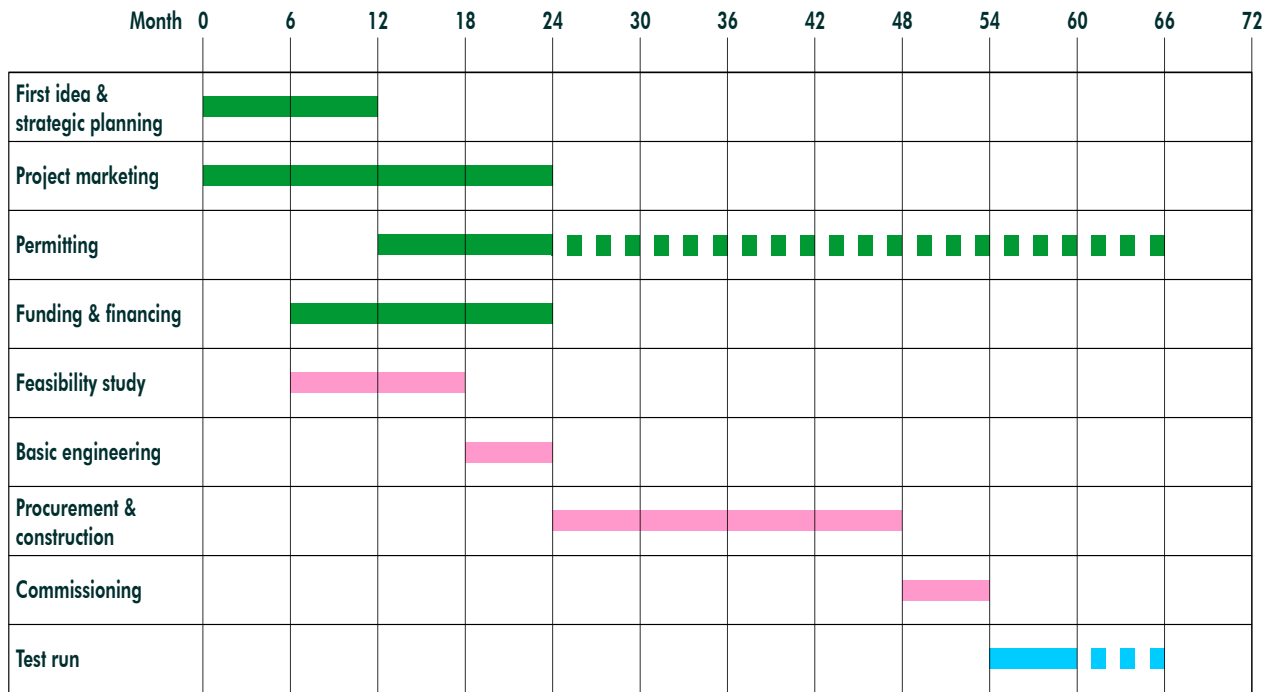
→ **non technical** risks dominate:

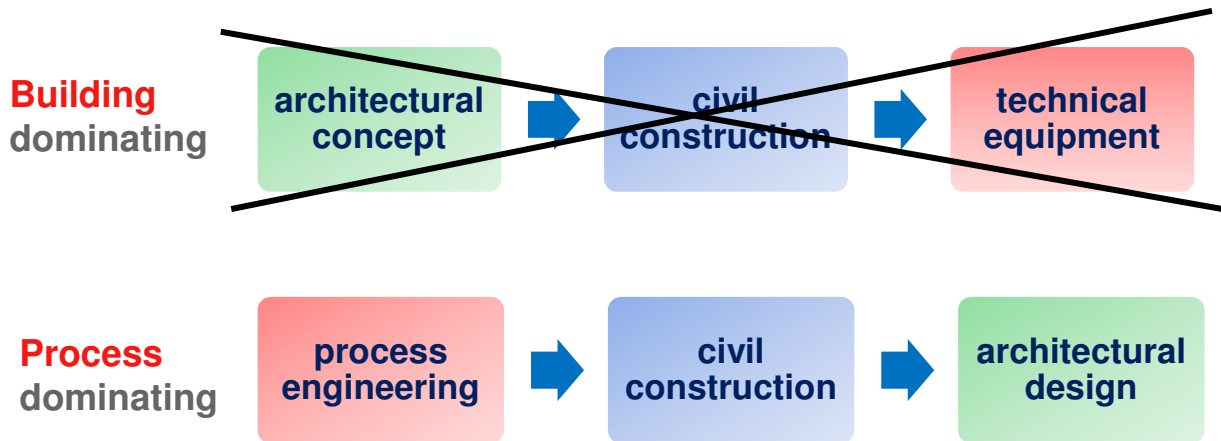
- blockage of **contracting procedure**
- **no permits**
- **public / political opposition**
- risks of **delay**
- **financial risks**

Means: Professional project development



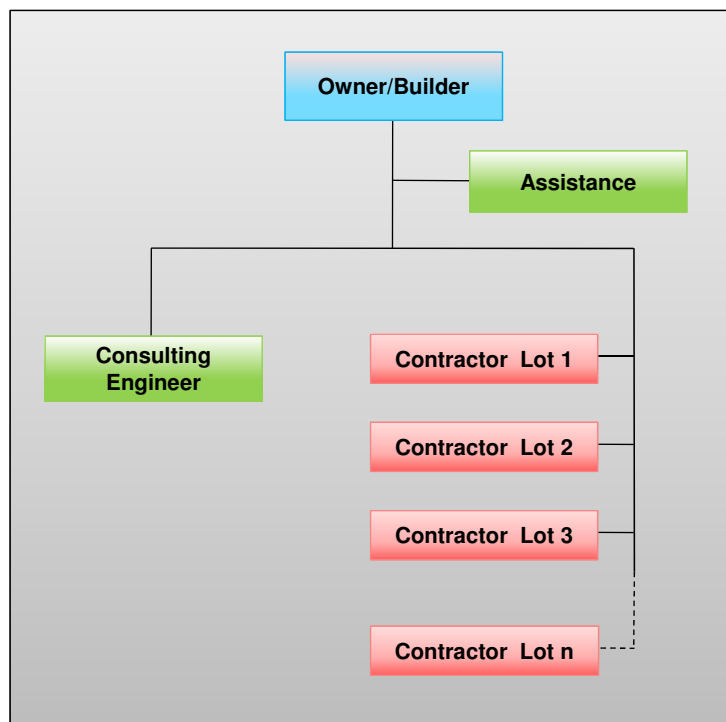






Multi-package Model

Supply contract



Multi-package Model

+ Advantage

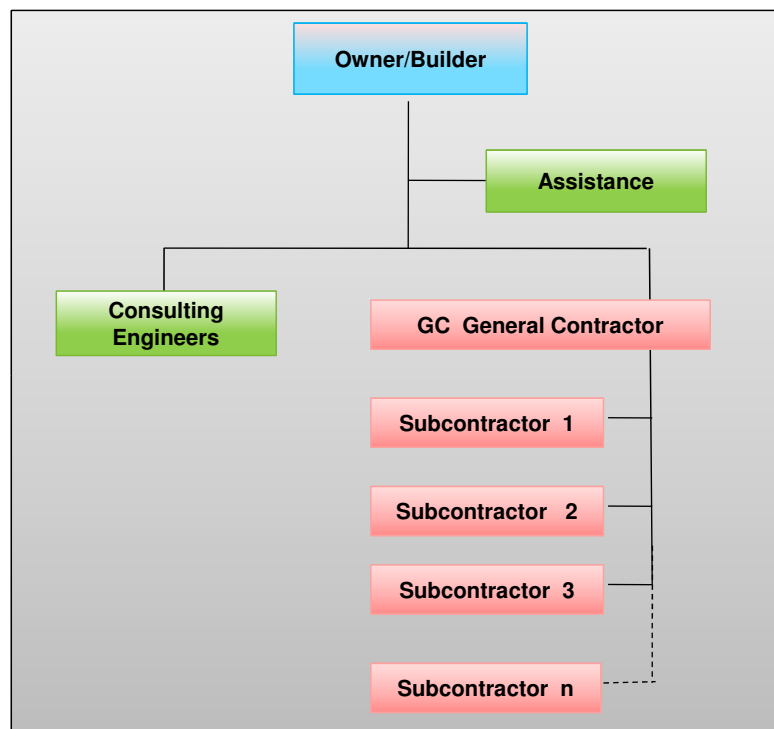
- maximum control for builder/owner
- tapping of market forces
- optimum technical choice of system assembly

- Disadvantage

- early planning and investment (consulting engineer)
- demanding coordination & project management

EPC
Engineering
Procurement
Construction

Supply
contract



EPC model (turnkey)

+ Advantage

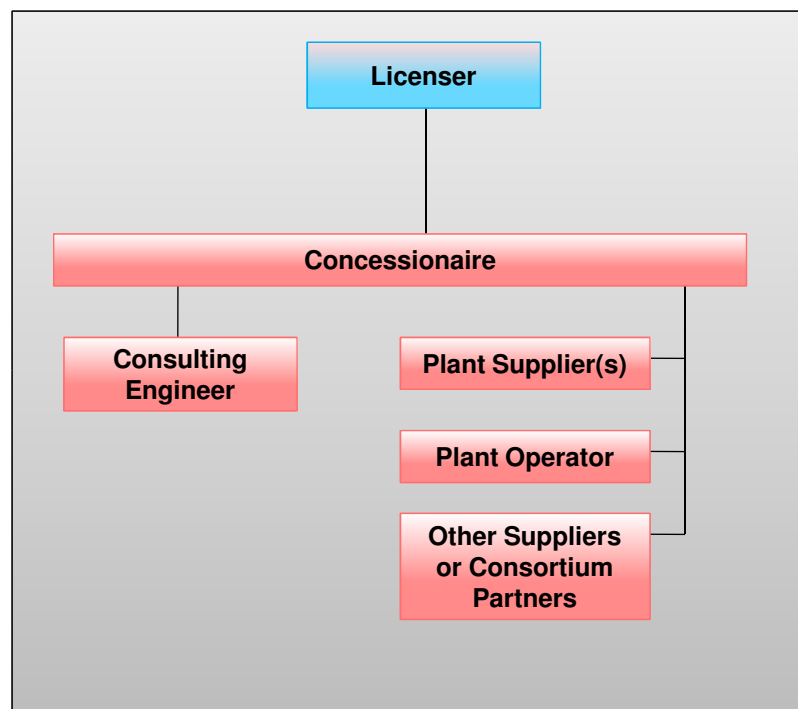
- builder / owner has technical and cost control
- one contract
- simple interface of responsibility

- Disadvantage

- limited bidder market
- higher costs

Concession Model

Service contract



Concession Model

+ Advantage

- no investment costs
- one contract

- Disadvantage

- risk of penalties (waste supply)
- no cost transparency
- no influence on plant design and operation

5 Conclusion

- project risks must be identified at the start
- zero risk **is not possible**
- **means** exist to eliminate or reduce risk
- procurement model defines
partition of risk purchaser - supplier
- waste treatment = highly specialized discipline
→ **RELY** on **experienced specialists**



Thank you for your attention !

IRF – Workshop in Poznan, 22. November 2012

tbf TBF+Partner AG
Consulting Engineers